

Instruction Manual

HAND-HYDRAULIC STACKER



Model: QSD50C/100C

**Note: Owner/Operator must read and understand this
instruction manual before using the stacker**

1. Brief Instruction

QSDC-SERIES hand-hydraulic stacker are a new loading and transport tool which designed according to the customer's required and market further. It is a convertible vehicle using for lifting and transporting in workshop, warehouse and wharf, etc. This stacker are also adapt to the special place which is easy to burning, exploding. It can reduce labor intensity, and improve produce efficiency and bring out safe operation.

2. Base Data

Model	QSD50C	QSD100C-14	QSD100C-16	QSD100C-18
Rate Capacity	500kg	1000kg	1000kg	1000kg
Min. Height	50mm	85mm	85mm	85mm
Max. Height	1550mm	1400mm	1600mm	1800mm
Fork Length	790mm	830mm	830mm	830mm
Fork Width	170-660mm	220-550mm	220-550mm	220-550mm
Total Width	730mm	730mm	730mm	730mm
Total Height	2065mm	1870mm	2070mm	2270mm
Net Weight	150kg	175kg	180kg	185kg
Packing Dimensions	1270x730x2065	1350x730x1870	1350x730x2070	1350x730x2270

3. Using

I. Test the stacker

- Check the stacker all the parts.
- Check the lift thing of the stacker: turn clockwise the operate rod handle, close the check valve, and foot the pedal equably to lift the fork table.
- Check the lowering down thing of the stacker: turn counter-clockwise the operate rod handle, open the check valve, the fork lower down.

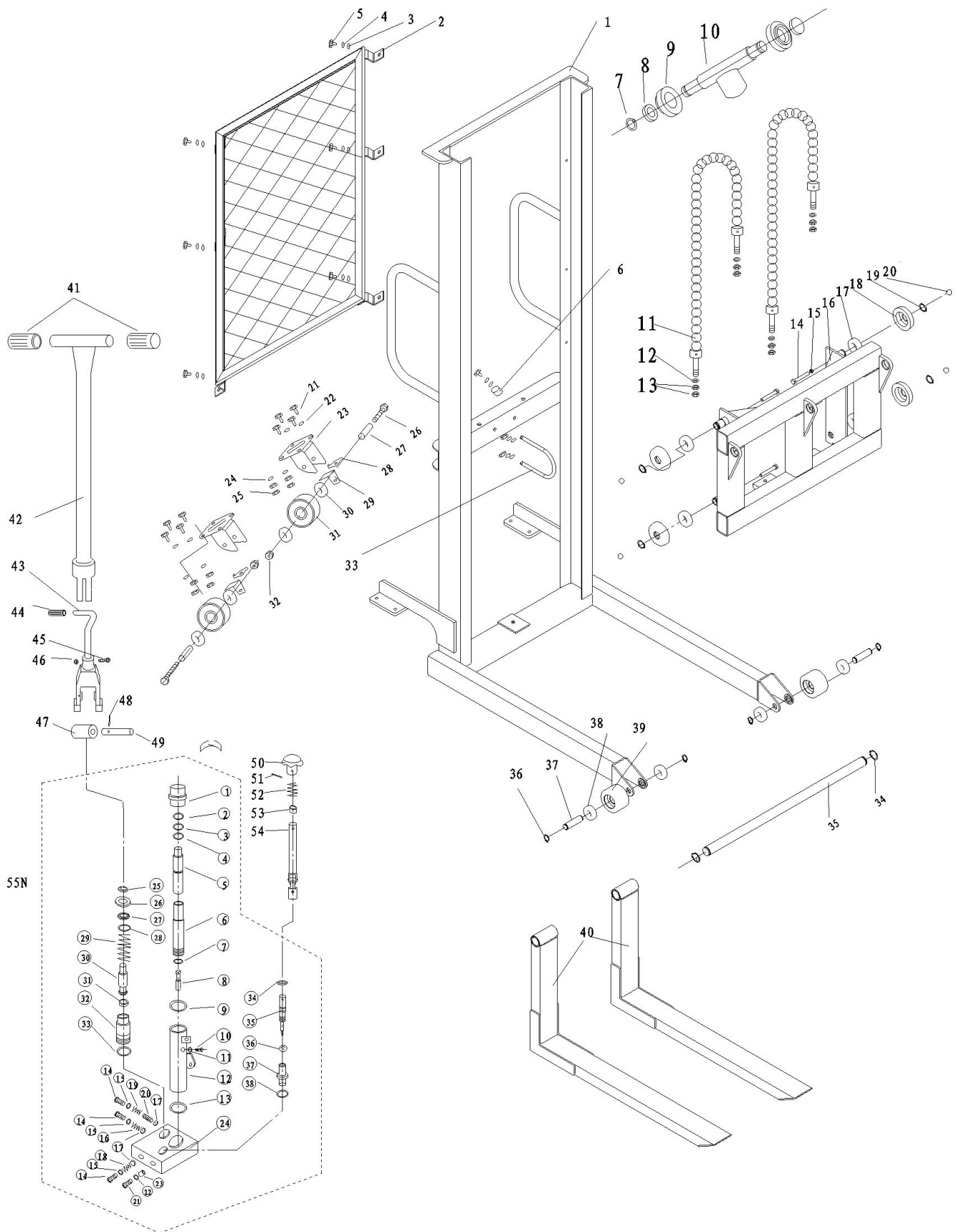
II. Operate

- Step on the brake pedal at the wheel to lock the stacker cart before loading.
- Close the check valve and raise the fork to the required level by treading on the foot pedal lever, then start to load or unload the cart within its rated capacity.
- To lower the fork, open the check value by turning the knob counter-clockwise.

III. Warning!

- Operate strictly according to the instruction manual.
- Do not use the cart on slop.
- Do not allow people to sit or ride on the cart.
- Keep feet and hand away from under the lowering table. Suggest to wear safety shoes during operation.
- Do not transport the loads during the raising process.
- Do not random regulate the safety valve.
- The maintenance is to be performed by the professional personnel strictly according to the related information of the instruction manual.
- Please not move stacker when loading and lies in the high position
- Mistake operate to this stacker will bring out damage to body and property.

QSD50C/100C HAND-HYDRAULIC STACKER



QSD50C/100C HAND-HYDRAULIC STACKER

No.	Description	Q'ty
1	Cart Holder	1
2	Nut	2
3	Washer	2
4	Flat Washer	2
5	Bolt	2
6	C-ring	2
7	C-ring	2
8	Chain Wheel	2
9	Link Shaft	1
10	Chain	2
11	Flat Washer	2
12	Nut	4
13	Bolt	4
14	Nut	4
15	Pulley Holder	1
16	Steel Ball	4
17	Bearing	4
18	Roll Guide	4
19	C-ring	4
20	Nut	2
21	Spring Washer	2
22	Flat Washer	2
23	Screw	1
24	C-ring	1
25	Long Shaft	1
26	Nut	8
27	Spring Washer	8
28	Flat Washer	8
29	Bolt	8
30	Swivel Wheel Holder	2
31	Back Wheel	2
32	Cover	2

No.	Description	Q'ty
33	Bearing	4
34	Wheel Shaft	2
35	Set Nut	2
36	C-ring	4
37	Wheel Shaft	2
38	Bearing	2
39	Wheel Shaft	2
40	Fork	2
41	Handle Cover	2
42	Handle	1
43	Foot Pedal Cover	1
44	Foot Pedal	1
45	Bolt	1
46	Nut	1
47	Press Wheel	1
48	Spring Column Pin	1
49	Shaft	1
50	Brake Lever	1
51	Screw	1
52	Spring	1
53	Bushing	1
54	Handle	1
55N	Cylinder Assembly	1
[1]	Cylinder Cover	1
[2]	Dust Cover	1
[3]	Oil Seal	1
[4]	O-ring	1
[5]	Pump Piston	1
[6]	Inside Cylinder Body	1
[7]	Down Washer	1
[8]	Filter oil Nut	1

No.	Description	Q'ty
[9]	Top Washer	1
[10]	Screw	1
[11]	O-ring	1
[12]	Outer Cylinder Body	1
[13]	Down Washer	1
[14]	Screw	3
[15]	O-ring	3
[16]	Single Valve Spring	1
[17]	Steel Ball	3
[18]	Single Valve Spring	1
[19]	Adjusting Spring	1
[20]	Circular Pin	1
[21]	Screw	1
[22]	O-ring	1
[23]	Descend Install	1
[24]	Valve	1
[25]	Lock C-ring	1
[26]	Spring Seat	1
[27]	U-packing	1
[28]	O-ring	1
[29]	Spring	1
[30]	Pump Piston	1
[31]	Y-ring	1
[32]	Pump Cylinder	1
[33]	O-ring	1
[34]	O-ring	1
[35]	Stop Screw	1
[36]	Steel Ball	1
[37]	Stop Valve Cover	1
[38]	O-ring	1